



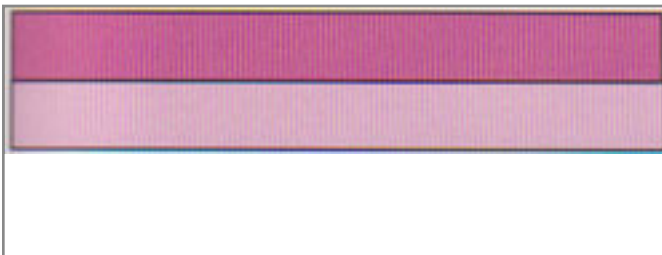
Rail Fence Placemats

from the book
Everyone Can Quilt by Kaye Wood

Make four identical place mats, or for a fun casual table, choose just one fabric to keep constant in every place mat and choose different colors for the second fabric. Make your rectangle squares from as few as two strips per square to as many strips as you want.

Yardage: 4 Place Mats

- 1 yd each fabric for rectangle squares
- 1 yd for backing
- 4 pieces (12"x16") of batting



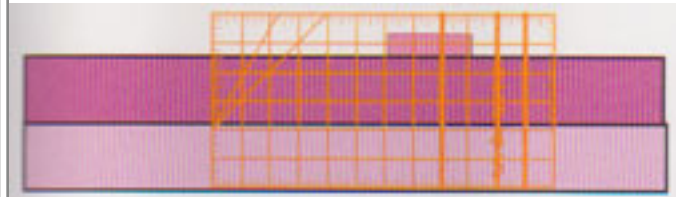
Sew Strip Sets.

1. Cut six 2-1/2" x 42/44" strips from each fabric.
2. Sew six strip sets as shown.

3. Set the seams. Press the seam allowances toward the darker fabric.

Cut Segments

1. Mark a ruler the width of the entire strip set (approximately 4-1/2") using tape or a piece of static sticker.



Accuracy Tip

This is the measurement used to cut the strip into rectangle squares.

2. Straighten the strip set.

Before cutting squares or rectangles, trim the end of the strip set to straighten and remove the selvedge.

3. Place the ruler on the strip so the mark on the ruler lines up with the end of the strip set. A crossline on the ruler should be on the seamline to help keep the block square.



4. Cut one segment along the right-hand side of the ruler.

Diagram is for right-hand cutting

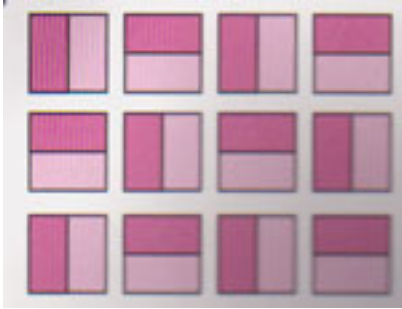
Accuracy Check

Fold the segment diagonally, the corners should line up perfectly.

If the corners do not line up, re-measure and re-mark the strip set width on the ruler.
If the corners do line up, you have a perfect square.

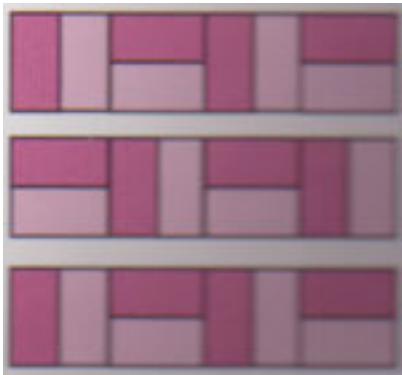
Congratulations!

5. Continue cutting 48 segments



Sew Into Rows

1. Lay out the segments for each place mat in the following rows.
2. Sew into rows, matching the top and bottom of the segments.
3. Set the seams. Press the seam allowances toward the solid strip (away from the cross seam).
4. Sew the rows together.



Finish the Place Mats.

Finish with an envelope style finish; or layer and quilt the place mats and finish them with a binding strip.

Lots more projects, hints, tips and techniques in Kaye Wood's
[Everyone Can Quilt Book](#)

Rail Fence Squares

All strips are 42/44" long.



Segment Size	Block Width	Strip Width	Segments per Strip Set
2½" x 2½"	1½"	2½"	16
3½" x 3½"	2"	3½"	12
4½" x 4½"	2½"	4½"	9
5½" x 5½"	3"	5½"	7
6½" x 6½"	3½"	6½"	6